



US00D544389S

(12) **United States Design Patent**
Ooten

(10) **Patent No.:** **US D544,389 S**

(45) **Date of Patent:** **** Jun. 12, 2007**

(54) **METAL CROCHET EARRING**

(76) Inventor: **Sonya Ooten**, 200 N. Larchmont, Los Angeles, CA (US) 90004

(**) Term: **14 Years**

(21) Appl. No.: **29/222,181**

(22) Filed: **Jan. 26, 2005**

(51) **LOC (8) Cl.** **11-01**

(52) **U.S. Cl.** **D11/43; D11/77; D11/40**

(58) **Field of Classification Search** D11/1-2,
D11/6-12, 16-17, 22, 25-28, 33-45, 47,
D11/55-56, 75, 77, 89, 90-93, 103; 63/12,
63/26, 28, 29.1, 35, 37

See application file for complete search history.

(56) **References Cited**

U.S. PATENT DOCUMENTS

296,505 A	4/1884	Babbitt	
324,014 A *	8/1885	Edge	63/37
606,617 A	6/1898	Zimkilton	
1,499,769 A	7/1924	Godefroy	
1,602,847 A	10/1926	Dover	
1,686,594 A *	10/1928	Anthony	63/33
1,797,583 A *	3/1931	Miller	428/608
D122,333 S *	9/1940	Brown	D11/44
2,823,525 A *	2/1958	Crigler	63/14.1
3,656,244 A *	4/1972	Andrade	36/1
3,693,637 A *	9/1972	Sidelman	132/55
3,727,609 A *	4/1973	Hale	606/204.35
3,746,016 A *	7/1973	Goodman	132/274
5,198,166 A *	3/1993	Bordelon	264/73
5,386,710 A *	2/1995	Moore	63/3
D439,014 S *	3/2001	Pender	D28/41
2004/0172970 A1	9/2004	Namiki	

FOREIGN PATENT DOCUMENTS

JP 200204709 A 7/2002

* cited by examiner

Primary Examiner—Louis S. Zarfes

Assistant Examiner—Susan E. Krakower

(74) *Attorney, Agent, or Firm*—Robert J. Lauson; Lauson & Associates

(57) **CLAIM**

The ornamental design for a metal crochet earring, as shown.

DESCRIPTION

The patent or application file contains at least one drawing executed in color. Copies of this patent or patent application publication with color drawing(s) will be provided by the Office upon request and payment of the necessary fee.

FIG. 1 is an enlarged top front angle perspective view of a preferred embodiment;

FIG. 2 is an enlarged front perspective view of the preferred embodiment;

FIG. 3 is an enlarged side perspective view of the preferred embodiment;

FIG. 4 is an enlarged rear perspective view of the preferred embodiment;

FIG. 5 is an enlarged top rear angle perspective view of the preferred embodiment;

FIG. 6 is an enlarged top front angle perspective view of an alternate embodiment;

FIG. 7 is an enlarged front perspective view of the alternative embodiment;

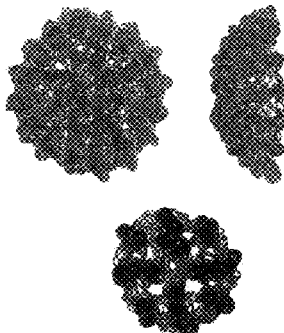
FIG. 8 is an enlarged side perspective of the alternate embodiment;

FIG. 9 is an enlarged rear perspective of the alternate embodiment; and,

FIG. 10 is an enlarged top rear angle perspective of the alternative embodiment.

1 Claim, 4 Drawing Sheets

(4 of 4 Drawing Sheet(s) Filed in Color)



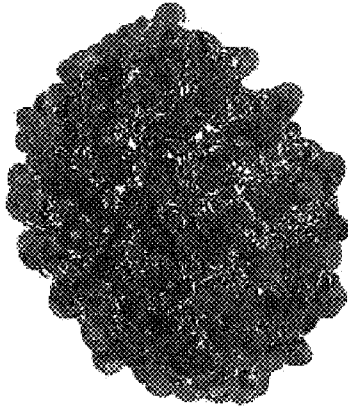


FIG. 1

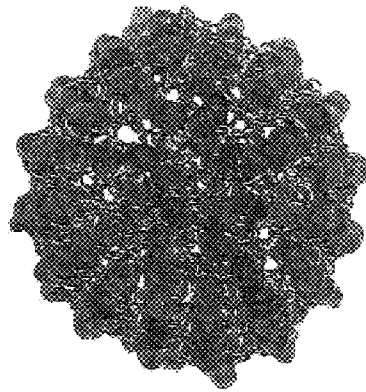


FIG. 2



FIG. 3

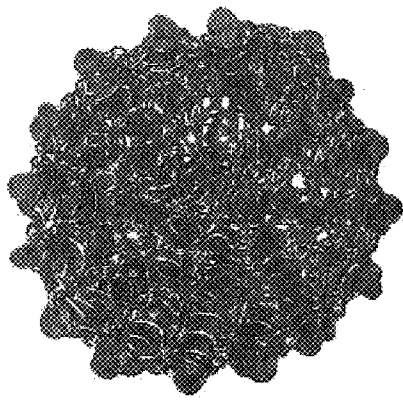


FIG. 4

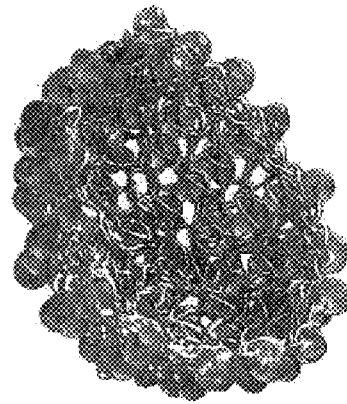


FIG. 5

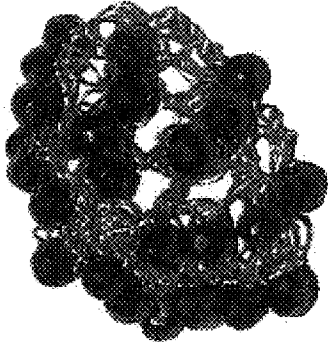


FIG. 6

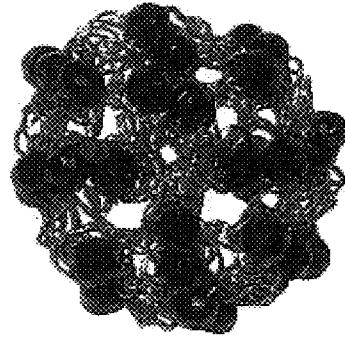


FIG. 7



FIG. 8

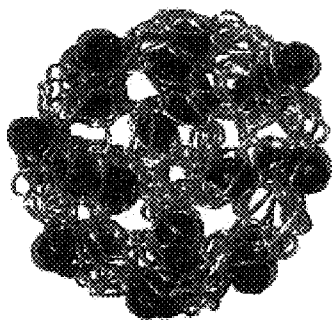


FIG. 9

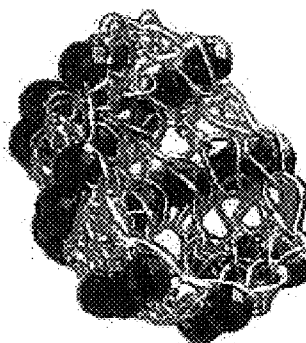


FIG. 10