



US00D547530S

(12) **United States Design Patent**
Lubell

(10) **Patent No.:** **US D547,530 S**
(45) **Date of Patent:** **** Jul. 31, 2007**

- (54) **STITCH PATTERN APPLIED TO PANTS**
- (75) Inventor: **Jeffrey Lubell**, Los Angeles, CA (US)
- (73) Assignee: **True Religion Apparel, Inc.**, Los Angeles, CA (US)
- (**) Term: **14 Years**

- D496,530 S 9/2004 Wolf
- D502,600 S 3/2005 Wolf
- D506,892 S 7/2005 Warren et al.
- D510,190 S 10/2005 Fenton et al.
- D511,606 S * 11/2005 Caucci D2/742

(21) Appl. No.: **29/244,409**

(22) Filed: **Dec. 9, 2005**

- (51) **LOC (8) Cl.** **02-02**
 - (52) **U.S. Cl.** **D2/742**
 - (58) **Field of Classification Search** D2/712-714,
D2/716, 742-748, 857; 2/2.17, 22, 23, 69,
2/71, 72, 76, 79, 221, 227, 228, 231-238,
2/247-254, 911, 919, DIG. 2
- See application file for complete search history.

FOREIGN PATENT DOCUMENTS

- EP 1502513 A1 * 2/2005
- IT 000335393-0002 * 9/2005

OTHER PUBLICATIONS

Bennetts: True Religion Brand Jeans. www.bennettsclothing.com/true_religion_jeans.htm. Feb. 2005. Jeans, Item A: center of page.*
 True Religion, Jeffrey Lubell www.truereligionbrandjeans.com, Womens and Mens Jeans USA.
 Goapparel, LLC, US Trademark for stitch design Filed: Nov. 3, 2005.

* cited by examiner

Primary Examiner—Ian Simmons
Assistant Examiner—R. Johnson
 (74) *Attorney, Agent, or Firm*—Christie, Parker & Hale, LLP

(56) **References Cited**

U.S. PATENT DOCUMENTS

- 2,318,199 A * 5/1943 Clements 2/407
- 3,959,826 A * 6/1976 Hakanson 2/227
- 4,015,318 A * 4/1977 Hakanson 28/165
- D261,323 S * 10/1981 Catron D2/742
- D263,766 S * 4/1982 Heinfling D2/857
- 4,513,454 A * 4/1985 Anderson et al. 2/246
- D339,220 S * 9/1993 Buziol D2/742
- D379,859 S 6/1997 Chan
- D414,012 S * 9/1999 Tobias D2/742
- 5,956,775 A * 9/1999 Ezra 2/227
- D417,340 S 12/1999 Moor
- D436,714 S * 1/2001 Korff D2/742
- D440,028 S * 4/2001 Korff D2/742
- 6,421,831 B1 * 7/2002 Korff 2/69
- D480,539 S 10/2003 Yan
- D484,301 S 12/2003 Issler

CLAIM

(57) The ornamental stitch pattern applied to pants, as shown and described.

DESCRIPTION

FIG. 1 is a front view of a stitch pattern applied to pants showing my new design, the broken line showing the pants is for illustrative purposes only and forms no part of the claimed design; and,
 FIG. 2 is a rear view, thereof.

1 Claim, 2 Drawing Sheets

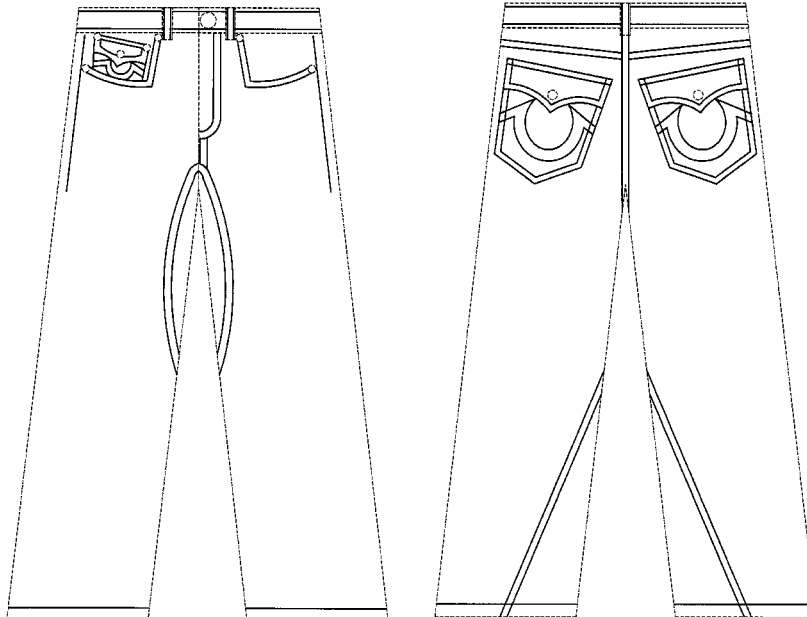


FIG. 1

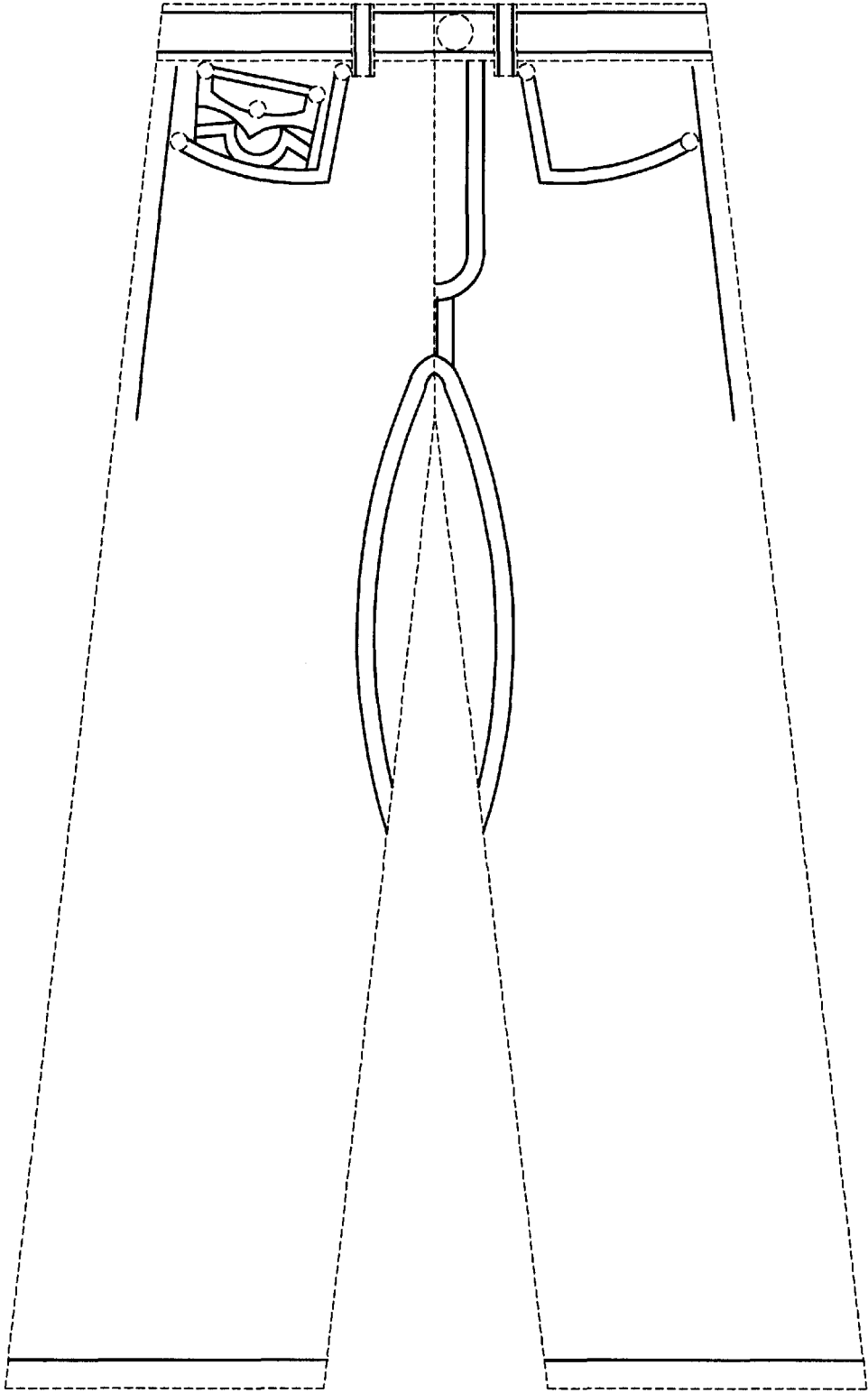


FIG. 2

